

FILTER SERIES

Snowate

Hengshui Snowate Environmental
Technology Co., Ltd.

2022

EDITION FOR
SNOWATE CATALOG



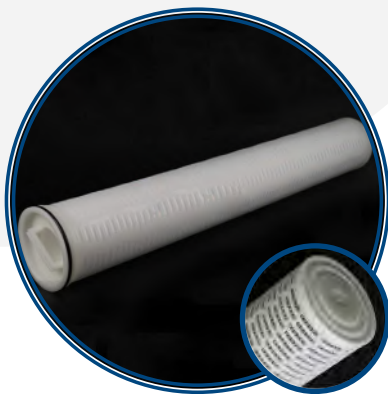
HIGH FLOW FILTER SERIES

High Flow PLDQ/PLSQ /CIC Series

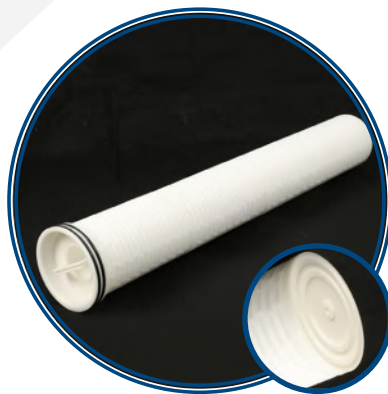
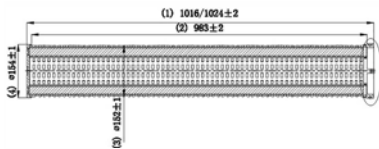
High Flow PLDQ/PLSQ /CIC Series Filter Cartridges are made from depth fine PP or GF non-woven fabrics. The filter has a big diameter of 6.3 and 6.5 inch/160 and 165mm and no inner core, single open, the inside to outside flow pattern ensure that all the particles will be intercepted at the inside of the filter. Also can do with inner core and outside to inside flow pattern ensure that all the particles will be intercepted at the outside of the filter. The long service life and high flow rate result in low investment and less manpower in many applications.

Product characteristics

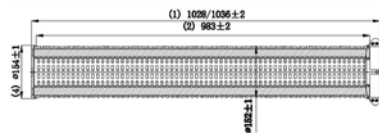
- High filtration area, high flow rate
- With depth fine non-woven fabrics and scientific design, the filter has a good structure which has high dirt holding capacity, and result in long service life
- 100% PP material makes the filter cartridge got excellent chemical compatibility. It is suitable for various liquid filtration



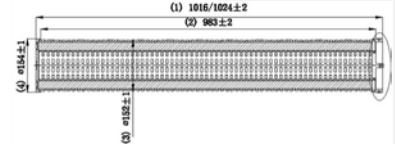
High Flow PLDQ Series



High Flow PLSQ Series



High Flow CIC Series



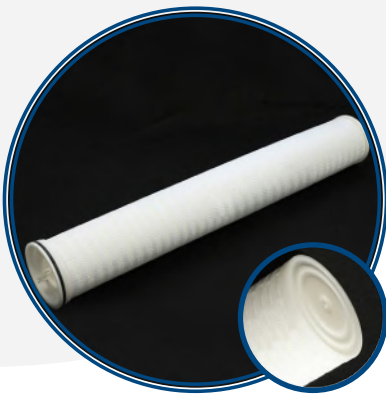
Dimension	Removal Rating: 0.5 um, 1um, 3 um, 5 um, 10 um, 20 um, 50 um, 75 um, 100 um
	Length: 20", 30", 40", 50", 60" (as customized)
Material of Constructions	Media: Polypropylene(PP)/Glass Fiber
	Drain layer: China Non-Woven Fabric
	End cap: Polypropylene(PP)
	Seal/Gasket: Silicone, EPDM, NBR, Viton
Performance	Core: Polypropylene(PP)
	Max. Operating temperature: 80°C Max. Operating DP: 4.0Bar@21°C, 2.4Bar@80°C

High Flow PLTS/PLTYW/PL-FB-NLW Series

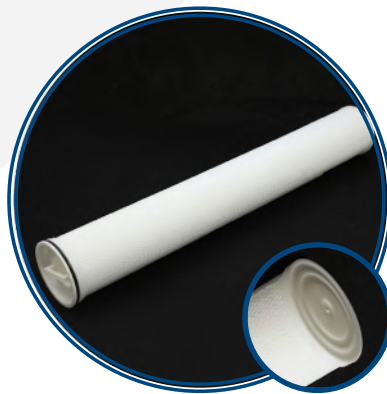
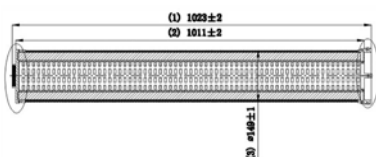
High Flow PLTS/PLTYW/PL-FB-NLW Series Filter Cartridges are made from depth fine PP or GF non-woven fabrics. The filter has a big diameter of 6.3 inch/160mm and no inner core, single open, the inside to outside flow pattern ensure that all the particles will be intercepted at the inside of the filter. Also can do with inner core and outside to inside flow pattern ensure that all the particles will be intercepted at the outside of the filter. The long service life and high flow rate result in low investment and less manpower in many applications.

Product characteristics

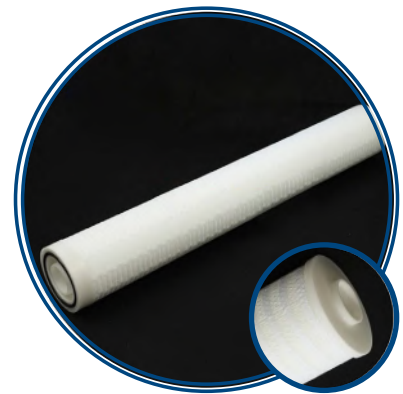
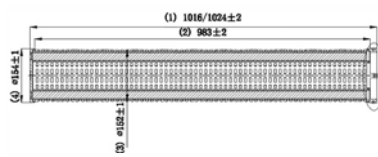
- High filtration area, high flow rate
- With depth fine non-woven fabrics and scientific design, the filter has a good structure which has high dirt holding capacity, and result in long service life
- 100% PP material makes the filter cartridge got excellent chemical compatibility. It is suitable for various liquid filtration



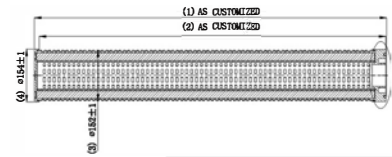
High Flow PLTS Series



High Flow PLTYW Series



High Flow PL-FB-NLW Series



Dimension	Removal Rating: 0.5 um, 1um, 3 um, 5 um, 10 um, 20 um, 50 um, 75 um, 100 um
	Length: 20", 30", 40", 50", 60" (as customized)
Material of Constructions	Media: Polypropylene(PP) / Glass Fiber
	Drain layer: China Non-Woven Fabric
	End cap: Polypropylene(PP)
	Seal/Gasket: Silicone, EPDM, NBR, Viton
Performance	Core: Polypropylene(PP)
	Max. Operating temperature: 80°C Max. Operating DP: 4.0Bar@21°C, 2.4Bar@80°C

High Flow M1/M2 Series

High Flow M1/M2 Series Filter Cartridges are made from depth fine PP or GF non-woven fabrics. The filter has a big diameter of 6.5 inch/165mm and with inner core, single open, the outside to inside flow pattern ensure that all the particles will be intercepted at the outside of the filter. The long service life and high flow rate result in low investment and less manpower in many applications.

Product characteristics

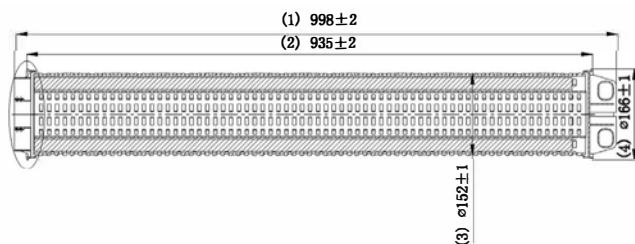
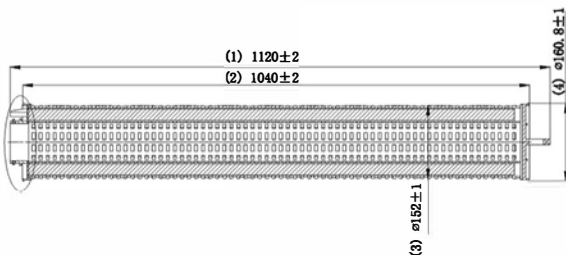
- High filtration area, high flow rate
- With depth fine non-woven fabrics and scientific design, the filter has a good structure which has high dirt holding capacity, and result in long service life
- 100% PP material makes the filter cartridge got excellent chemical compatibility. It is suitable for various liquid filtration



High Flow M1 Series



High Flow M2 Series



Dimension	Removal Rating: 0.5 um, 1um, 3 um, 5 um, 10 um, 20 um, 50 um, 75 um, 100 um
	Length: 20", 30", 40", 50", 60" (as customized)
Material of Constructions	Media: Polypropylene(PP) / Glass Fiber
	Drain layer: China Non-Woven Fabric
	End cap: Polypropylene(PP)
	Seal/Gasket: Silicone, EPDM, NBR, Viton
	Core: Polypropylene(PP)
Performance	Max. Operating temperature: 80°C
	Max. Operating DP: 4.0Bar@21°C, 2.4Bar@80°C

High Flow M3/M4 Series

High Flow M3/M4 Series Filter Cartridges are made from depth fine PP or GF non-woven fabrics. The filter has a big diameter of 6 inch/152mm and with inner core, single open, the outside to inside flow pattern ensure that all the particles will be intercepted at the outside of the filter. The long service life and high flow rate result in low investment and less manpower in many applications.

Product characteristics

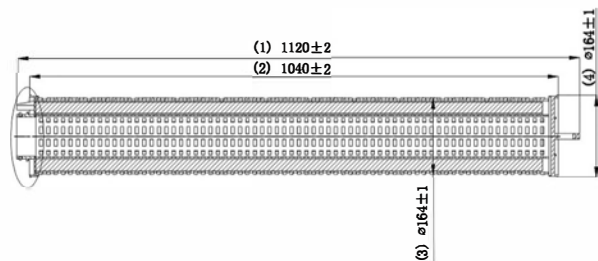
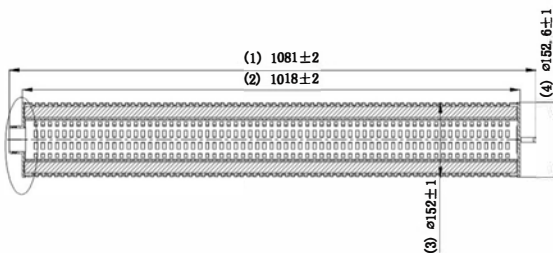
- High filtration area, high flow rate
- With depth fine non-woven fabrics and scientific design, the filter has a good structure which has high dirt holding capacity, and result in long service life
- 100% PP material makes the filter cartridge got excellent chemical compatibility. It is suitable for various liquid filtration



High Flow M3 Series



High Flow M4 Series



Dimension	Removal Rating: 0.5 um, 1 um, 3 um, 5 um, 10 um, 20 um, 50 um, 75 um, 100 um
	Length: 20", 30", 40", 50", 60" (as customized)
Material of Constructions	Media: Polypropylene(PP) / Glass Fiber
	Drain layer: China Non-Woven Fabric
	End cap: Polypropylene(PP)
	Seal/Gasket: Silicone, EPDM, NBR, Viton
	Core: Polypropylene(PP)
Performance	Max. Operating temperature: 80°C
	Max. Operating DP: 4.0Bar@21°C, 2.4Bar@80°C

High Flow PKDQ/PKSQ/FSFE Series

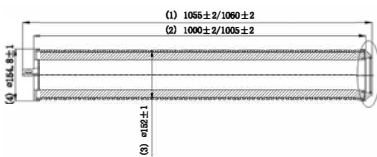
High Flow PKDQ/PKSQ/FSFE Series Filter Cartridges are made from depth fine PP or GF non-woven fabrics. The filter has a big diameter of 6 inch/152mm and with inner core, single open, the outside to inside flow pattern ensure that all the particles will be intercepted at the outside of the filter. The long service life and high flow rate result in low investment and less manpower in many applications.

Product characteristics

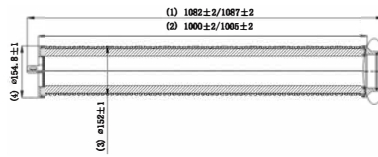
- High filtration area, high flow rate
- With depth fine non-woven fabrics and scientific design, the filter has a good structure which has high dirt holding capacity, and result in long service life
- 100% PP material makes the filter cartridge got excellent chemical compatibility. It is suitable for various liquid filtration



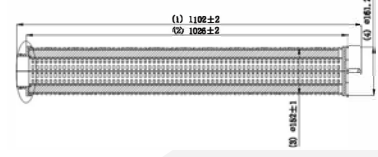
High Flow PKDQ Series



High Flow PKSQ Series



High Flow FSFE Series



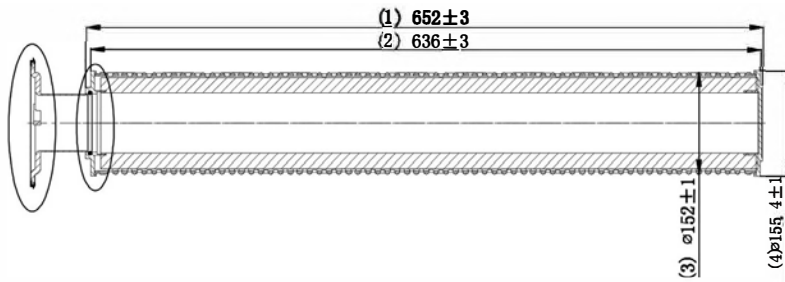
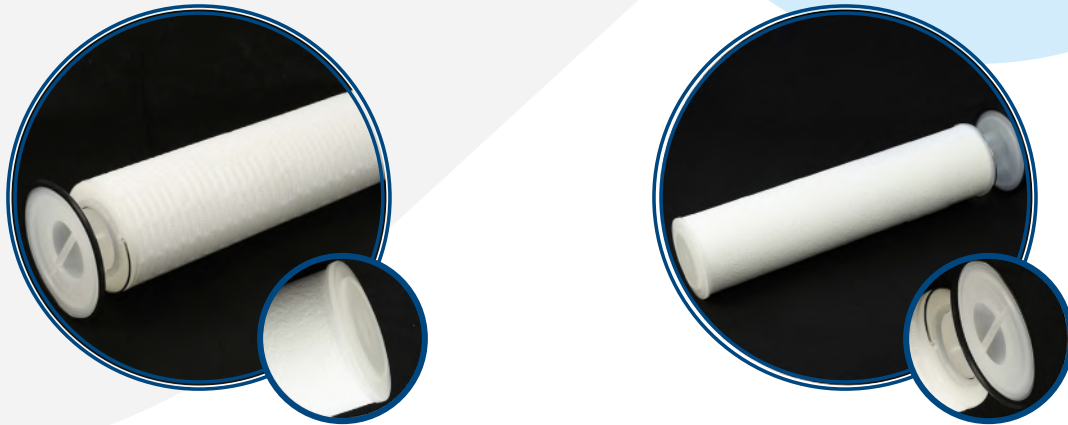
Dimension	Removal Rating: 0.5 um, 1um, 3 um, 5 um, 10 um, 20 um, 50 um, 75 um, 100 um
	Length: 20", 30", 40", 50", 60" (as customized)
Material of Constructions	Media: Polypropylene(PP) / Glass Fiber
	Drain layer: China Non-Woven Fabric
	End cap: Polypropylene(PP)
	Seal/Gasket: Silicone, EPDM, NBR, Viton
Performance	Core: Polypropylene(PP)
	Max. Operating temperature: 80°C Max. Operating DP: 4.0Bar@21°C, 2.4Bar@80°C

High Flow LD Series

High Flow LD Series Filter Cartridges are made from depth fine PP or GF non-woven fabrics. The filter has a big diameter of 6 inch/152mm and no inner core, single open. The inside to outside flow pattern ensure that all the particles will be intercepted at the inside of the filter. The long service life and high flow rate result in low investment and less manpower in many applications.

Product characteristics

- High filtration area, high flow rate
- With depth fine non-woven fabrics and scientific design, the filter has a good structure which has high dirt holding capacity, and result in long service life
- 100% PP material makes the filter cartridge got excellent chemical compatibility. It is suitable for various liquid filtration



Dimension	Removal Rating: 0.5 um, 1 um, 3 um, 5 um, 10 um, 20 um, 50 um, 75 um, 100 um
	Length: 610mm / 660mm (as customized)
Material of Constructions	Media: Polypropylene(PP)/Glass Fiber or Melt Blown Material
	Drain layer: China Non-Woven Fabric
	End cap: Polypropylene(PP)
	Seal/Gasket: Silicone, EPDM, NBR, Viton
	Core: Polypropylene(PP)
Performance	Max. Operating temperature: 80°C
	Max. Operating DP: 4.0Bar@21°C, 2.4Bar@80°C

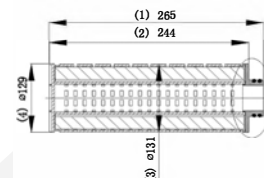
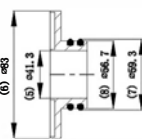
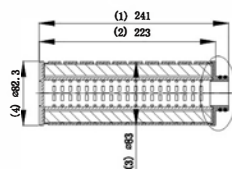
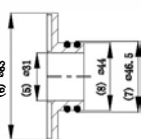
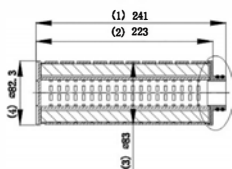
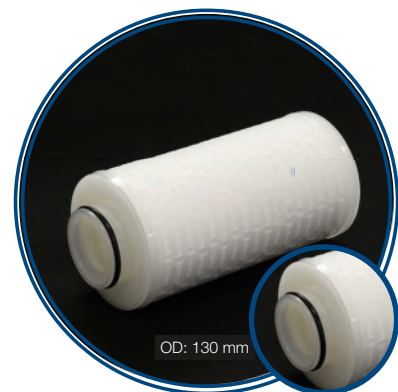
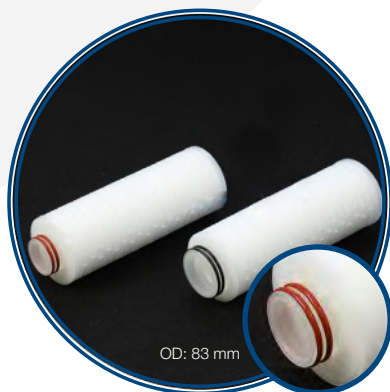
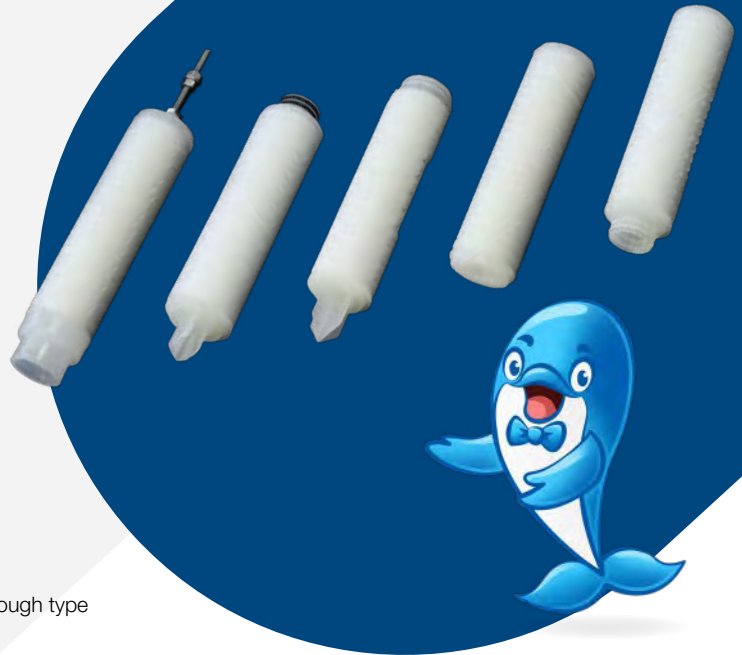
PLEATED MEMBRANE FILTER SERIES

Pleated Membrane PP Series

Pleated Membrane PP Series Filter Cartridges is constructed of high performance polypropylene filter media that got technological breakthrough type sub-micro level. The pores of the material are uniformly distributed. The construction is designed scientifically which makes the filter cartridge got high flow rate. This allows users can filter the particles in liquid quickly and efficiently and save the cost.

Product characteristics

- High performance polypropylene filter media that got technological breakthrough type sub-micro level makes filter cartridge have excellent performance.
- High performance media with scientifically design makes filter cartridge have fast and high flow rate
- High efficiency filter media combined with the characteristics of scientific structural design makes the filter has a high dirt holding capacity which result in a long service life
- High efficiency filter combined with the characteristics of scientific structural design makes the filter with absolute precision filtration efficiency
- 100% PP material makes the filter cartridge got excellent chemical compatibility. It is suitable for various liquid filtration



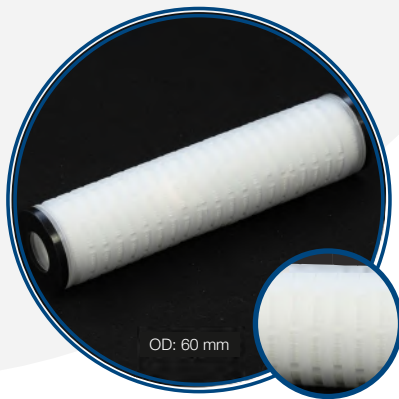
Dimension	Removal Rating: 0.1 um, 0.22 um, 0.45 um, 1 um, 3 um, 5 um, 10 um, 20 um, 50 um
	Length: 10", 20", 30", 40", 50", 60"
	OD: φ80mm, φ130mm
Material of Constructions	Media: Polypropylene(PP)
	End cap: Polypropylene(PP)
	Drain layer: Non-Woven Fabric (China or USA)
	Seal/Gasket: Silicone, EPDM, NBR, Viton
	Core: Polypropylene(PP). Stainle ss Steel(SUS)
Performance	Max. Operating temperature: 80°C
	Max. Operating DP: 4.0Bar@21°C, 2.4Bar@80°C

Pleated Membrane PP Series

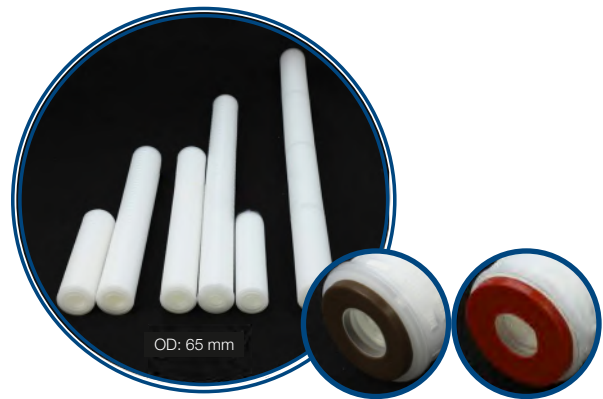
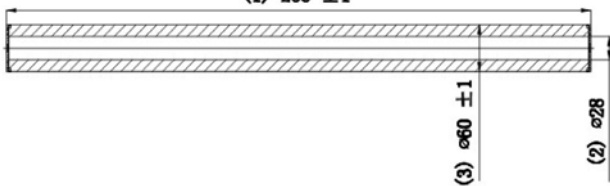
Pleated Membrane PP Series Filter Cartridges is constructed of high performance polypropylene filter media that got technological breakthrough type sub-micro level. The pores of the material are uniformly distributed. The construction is designed scientifically which makes the filter cartridge got high flow rate. This allows users can filter the particles in liquid quickly and efficiently and save the cost.

Product characteristics

- High performance polypropylene filter media that got technological breakthrough type sub-micro level makes filter cartridge have excellent performance.
- High performance media with scientifically design makes filter cartridge have fast and high flow rate
- High efficiency filter media combined with the characteristics of scientific structural design makes the filter has a high dirt holding capacity which result in a long service life
- High efficiency filter combined with the characteristics of scientific structural design makes the filter with absolute precision filtration efficiency
- 100% PP material makes the filter cartridge got excellent chemical compatibility. It is suitable for various liquid filtration

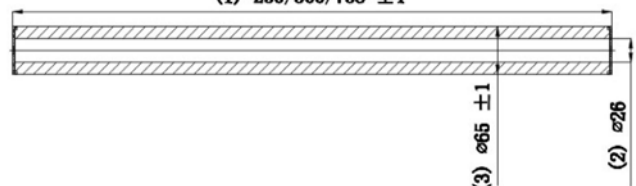


(1) 253 ±1



OD: 65 mm

(1) 250/500/758 ±1



Dimension	Removal Rating: 0.1 um, 0.22 um, 0.45 um, 1 um, 3 um, 5 um, 10 um, 20 um, 50 um
	Length: 10", 20", 30", 40", 50", 60"
	OD: φ 60mm, φ 65mm, φ 68mm
Material of Constructions	Media: Polypropylene(PP)
	End cap: Polypropylene(PP)
	Drain layer: Non-Woven Fabric (China or USA)
	Seal/Gasket: Silicone, EPDM, NBR, Viton
Performance	Core: Polypropylene(PP). Stainle ss Steel(SUS)
	Max. Operating temperature: 80°C Max. Operating DP: 4.0 Bar@21°C, 2.4 Bar@80°C

Pleated Membrane PP Series

Pleated Membrane PP Series Filter Cartridges are constructed of high performance polypropylene filter media that got technological breakthrough type sub-micro level. The pores of the material are uniformly distributed. The construction is designed scientifically which makes the filter cartridge get high flow rate. This allows users can filter the particles in liquid quickly and efficiently and save the cost.



Product characteristics

- High performance polypropylene filter media that got technological breakthrough type sub-micro level makes filter cartridge have excellent performance.
- High performance media with scientific design makes filter cartridge have fast and high flow rate
- High efficiency filter media combined with the characteristics of scientific structural design makes the filter has a high dirt holding capacity which result in a long service life
- High efficiency filter combined with the characteristics of scientific structural design makes the filter with absolute precision filtration efficiency
- 100% PP material makes the filter cartridge get excellent chemical compatibility. It is suitable for various liquid filtration

Dimension	Removal Rating: 0.1 um, 0.22 um, 0.45 um, 1 um, 3 um, 5 um, 10 um, 20 um, 50 um
	Length: 5 inch - 70 inch
	OD: ϕ 60mm, ϕ 65mm, ϕ 68mm
Material of Constructions	Media: Polypropylene(PP)
	End cap: Polypropylene(PP)
	Drain layer: Non-Woven Fabric (China or USA)
	Seal/Gasket: Silicone, EPDM, NBR, Viton
	Core: Polypropylene(PP). Stainle ss Steel(SUS)
Performance	Max. Operating temperature: 80°C
	Max. Operating DP: 4.0 Bar@21°C, 2.4 Bar@80°C

Pleated Membrane NL Series

Pleated Membrane NL Series Filter Cartridges is constructed of nylon6 media and nonwoven support materials. The adaptors are thermally welded without the use of glues or adhesive to prevent any possibility of pollution. The filters are produced in clean room and 100% integrity tested and flushed with ultrapure water.



Product characteristics

- The absolute nylon fiber membrane provides high filtration efficiency. ensure that impurities in the liquids are removed
- The filter cartridge is made of high purity material to ensure low precipitation. Thermal weld welding technology, do not add any adhesive and active agent, effectively reduce the risk of filter precipitation, ensure the safe usage
- 100% integrity tested

Dimension	Removal Rating: 0.1 um, 0.22 um, 0.45 um, 1 um
	Length: 5"(127mm), 9.87"(250mm), 10"(254mm), 20"(508mm), 30"(762mm), 40"(1016mm)
	OD: ϕ 60mm, ϕ 65mm, ϕ 68mm
Material of Constructions	Media: Nylon Membrane
	End cap: Polypropylene(PP)
	Drain layer: Non-Woven Fabric of DuPont, USA
	Seal/Gasket: Silicone, EPDM, NBR, Viton
	Core: Polypropylene(PP). Stainle ss Steel(SUS)
Performance	Max. Operating temperature: 80°C
	Max. Operating DP: 4.0 Bar@21°C, 2.4 Bar@80°C

Pleated Membrane PTIL Series

Pleated Membrane PTIL Series F filter Cartridges is constructed of hydrophilic PTFE membrane which has excellent chemical compatibility and corrosion resistance. The membrane is hydrophilic which can filter the liquid directly without pre-wetting to save the operation time.



Product characteristics

- The membrane is hydrophilic which can filter the liquid directly without pre-wetting to save the operation time
- PTFE membrane got excellent chemical compatibility. It has good tolerance to various chemical and can be used for filtering kinds of corrosive liquids
- PTFE membrane provide high filtration efficiency with absolute micron rating make sure to reduce the particulates
- 100% integrity tested

Dimension	Removal Rating: 0.1 um, 0.22 um, 0.45 um, 1 um
	Length: 5"(127mm), 9.87"(250mm), 10"(254mm), 20"(508mm), 30"(762mm), 40"(1016mm)
	OD: ϕ 60mm, ϕ 65mm, ϕ 68mm
Material of Constructions	Media: Hydrophilic PTFE Membrane
	End cap: Polypropylene(PP)
	Drain layer: Non-Woven Fabric of DuPont, USA
	Seal/Gasket: Silicone, EPDM, NBR, Viton
	Core: Polypropylene(PP). Stainless Steel(SUS)
Performance	Max. Operating temperature: 80°C
	Max. Operating DP: 4.0 Bar@21°C, 2.4 Bar@80°C

Pleated Membrane PTOB Series

Pleated Membrane PTOB Series filter cartridge is constructed of hydrophobic PTFE membrane which has excellent chemical compatibility and corrosion resistance. This filter cartridge is suitable for the filtration of liquids and gases with strongly aggressive and oxidative.



Product characteristics

- PTFE membrane got excellent chemical compatibility.
It has good tolerance to various chemical and can be used for filtering kinds of corrosive liquids and gases
- PTFE membrane provide high filtration efficiency with absolute micron rating make sure to reduce the particulates
- 100% integrity tested

Dimension	Removal Rating: 0.1 um, 0.22 um, 0.45 um, 1 um
	Length: 5"(127mm), 9.87"(250mm), 10"(254mm), 20"(508mm), 30"(762mm), 40"(1016mm)
	OD: ϕ 60mm, ϕ 65mm, ϕ 68mm
Material of Constructions	Media: Hydrophilic PTFE Membrane
	End cap: Polypropylene(PP)
	Drain layer: Non-Woven Fabric of DuPont, USA
	Seal/Gasket: Silicone, EPDM, NBR, Viton
	Core: Polypropylene(PP). Stainle ss Steel(SUS)
Performance	Max. Operating temperature: 80°C
	Max. Operating DP: 4.0 Bar@21°C, 2.4 Bar@80°C

Pleated Membrane PES Series

Pleated Membrane PES Series filter cartridge is constructed of imported hydrophilic asymmetric PES membrane and imported nonwoven fabrics and silk netting as support and then pleated. The cage, PP core and end cap are thermally welded with media without using any glue. All cartridges are manufactured and assembled in a clean room environment. 100% of the cartridges are integrity tested and flushed with EDI pure water. It is suitable for filtering weak acid/alkali based liquid and ultra pure water.

Product characteristics

- Asymmetric membrane structure.
- High hydrophilic membrane, high flow rate, the pores of membrane uniformly distributed
- The membrane construction of asymmetric enlarge the dirty capability and extend the life time of the filter cartridge
- Do not use any glue and surface active agent during production process which reduces the risk of precipitation effectively
- 100% integrity tested



Dimension	Removal Rating: 0.1 um, 0.22 um, 0.45 um, 1 um
	Length: 10"(254mm), 20"(508mm), 30"(762mm), 40"(1016mm)
	OD: ϕ 60mm, ϕ 65mm, ϕ 68mm
Material of Constructions	Media: Asymmetric PES Membrane
	End cap: Polypropylene(PP)
	Drain layer: Non-Woven Fabric (China or USA)
	Seal/Gasket: Silicone, EPDM, NBR, Viton
Performance	Core: Polypropylene(PP). Stainle ss Steel(SUS)
	Max. Operating temperature: 80°C Max. Operating DP: 4.0 Bar@21°C, 2.4 Bar@80°C

STRINGWOUND FILTER SERIES

String Wound PP/AC Series

String Wound PP/AC Series Filter Cartridges is made from fine fiber yarn and comes out special patterns by certain technology . It has strong dirt holding capacity because of depth structure with loose outside part and close inner part. And as a result the filter has long service life. It is a good choice for prefiltration before RO in the making process of ultrapure water.



Product characteristics

- Depth graded filtration.
- Loose outside part and close inner part of the filter comes out depth structure. for graded filtration which can retain more particles and extend the service life.
- Wide chemical compatibility.
- Much micron ratings for choosing.

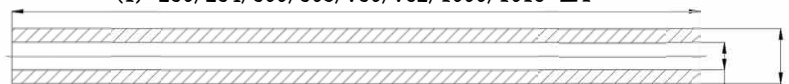


String Wound PP Series



String Wound AC Series

(1) 250/254/500/508/750/762/1000/1016 ±1



(2) $\varnothing 28/30 \pm 1$
(3) $\varnothing 60-62 \pm 1$

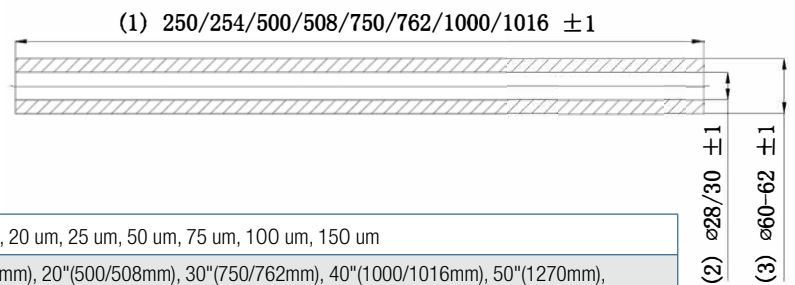
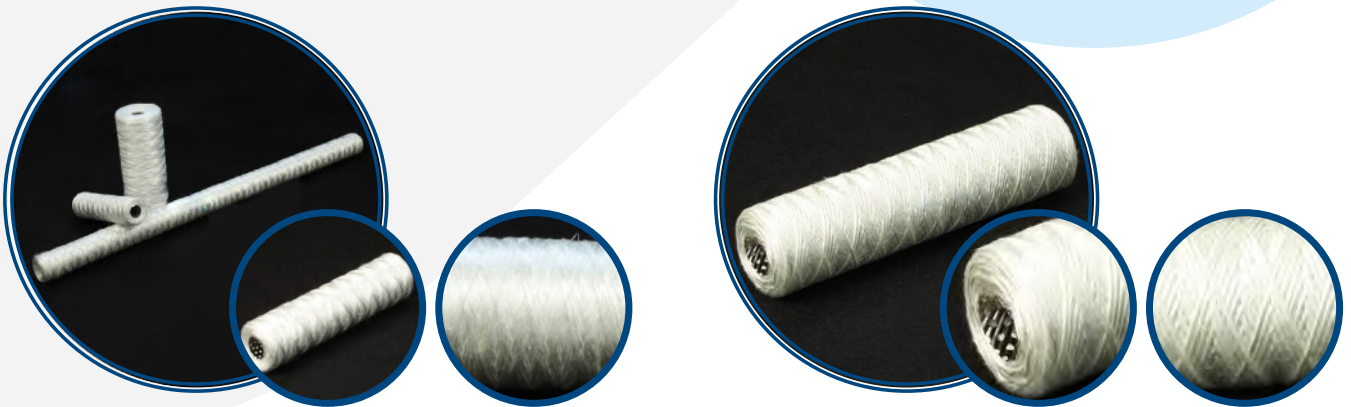
Dimension	Removal Rating: 1um, 5 um, 10 um, 20 um, 25 um, 50 um, 75 um, 100 um, 150 um
	Length: 5"(127mm), 10"(250/ 254mm), 20"(500/508mm), 30"(750/762mm), 40"(1000/1016mm), 50"(1270mm), 60"(1524mm), 70"(1778mm)
	OD: $\varnothing 60\text{mm}$, $\varnothing 62\text{mm}$, $\varnothing 68\text{mm}$, $\varnothing 114\text{mm}$ ID: $\varnothing 28\text{mm}$, $\varnothing 30\text{mm}$
Material of Constructions	Media: Polypropylene(PP)
	End cap: Polypropylene(PP)
	Seal/Gasket: Silicone, EPDM, NBR, Viton Core: Polypropylene(PP). Stainle ss Steel(SUS)
Performance	Max. Operating temperature: 60°C
	Max. Operating DP: 2.0Bar@25°C

String Wound GF Series

String Wound GF Series Filter Cartridges is made from Glass Fiber and comes out special patterns by certain technology. It has strong dirt holding capacity because of depth structure with loose outside part and close inner part. And as a result the filter has long service life. It is a good choice for prefiltration before RO in the making process of ultra pure water

Product characteristics

- Depth graded filtration.
- Loose outside part and close inner part of the filter comes out depth structure for graded filtration Which can retain more particles and extend the service life.
- Wide chemical compatibility.
- Much micron ratings for choosing
- High temperature resistance



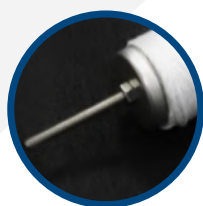
Dimension	Removal Rating: 1um, 5 um, 10 um, 20 um, 25 um, 50 um, 75 um, 100 um, 150 um
	Length: 5"(127mm), 10"(250/ 254mm), 20"(500/508mm), 30"(750/762mm), 40"(1000/1016mm), 50"(1270mm), 60"(1524mm), 70"(1778mm)
	OD: φ60mm, φ62mm, φ68mm, φ114mm
	ID: φ28mm, φ30mm
Material of Constructions	Media: Glass Fiber (GF)
	End cap: Polypropylene (PP)
	Seal/Gasket: Silicone, EPDM, NBR, Viton
	Core: Polypropylene (PP). Stainle ss Steel (SUS)
Performance	Max. Operating temperature: 60°C
	Max. Operating DP: 2.0Bar@25°C

Power Plant Series

Power Plant Series Filter Cartridges is made from fine fiber yarn and comes out special patterns by certain technology .It has strong dirt holding capacity because of depth structure with loose outside part and close inner part. And as a result the filter has long service life. It is a good choice for prefiltration before RO in the making process of ultra pure water.

Product characteristics

- Depth graded filtration.
- Loose outside part and close inner part of the filter comes out depth structure for graded filtration Which can retain more particles and extend the service life.
- Wide chemical compatibility.
- Much micron ratings for choosing.



Dimension	Removal Rating: 1um, 5 um, 10 um, 20 um, 25 um, 50 um, 75 um, 100 um, 150 um
	Length: 40" (1016mm), 50" (1270mm), 60" (1524mm), 70" (1778mm)
	OD: ϕ 60mm, ϕ 62mm, ϕ 68mm, ϕ 114mm
	ID: ϕ 28mm, ϕ 30mm
Material of Constructions	Media: Polypropylene (PP)
	End cap: Polypropylene (PP)
	Seal/Gasket: Silicone, EPDM, NBR, Viton
	Core: Polypropylene (PP), Stainle ss Steel (SUS)
Performance	Max. Operating temperature: 60°C
	Max. Operating DP: 2.0Bar@25°C

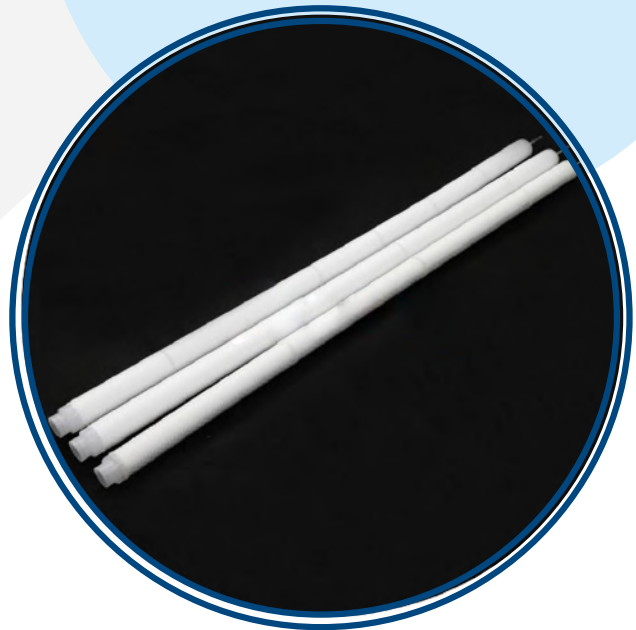
Power Plant Series

Power Plant Series Filter Cartridges is constructed of high performance polypropylene filter media that got technological breakthrough type sub-micro level. The pores of the material are uniformly distributed.

The construction is designed scientifically which makes the filter cartridge got high flow rate. This allows users can filter the particles in liquid quickly and efficiently and save the cost.

Product characteristics

- High performance polypropylene filter media that got technological breakthrough type sub-micro level makes filter cartridge have excellent performance.
- High performance media with scientifically design makes filter cartridge have fast and high flow rate.
- High efficiency filter media combined with the characteristics of scientific structural design makes the filter has a high dirt holding capacity which result in a long service life.
- High efficiency filter combined with the characteristics of scientific structural design makes the filter with absolute precision filtration efficiency.
- 100% PP material makes the filter cartridge got excellent chemical compatibility. It is suitable for various liquid filtration



Dimension	Removal Rating: 0.1 um, 0.22 um, 0.45 um, 1 um, 3 um, 5 um, 10 um, 20 um, 50 um
	Length: 60" (1524mm), 70" (1778mm)
	OD: ϕ 60mm, ϕ 65mm, ϕ 68mm
Material of Constructions	Media: Polypropylene (PP)
	End cap: Polypropylene (PP)
	Drain layer: Non-Woven Fabric (China or USA)
	Seal/Gasket: Silicone, EPDM, NBR, Viton
Performance	Core: Polypropylene (PP), Stainle ss Steel (SUS)
	Max. Operating temperature: 80°C Max. Operating DP: 4.0Bar@21°C, 2.4Bar@80°C

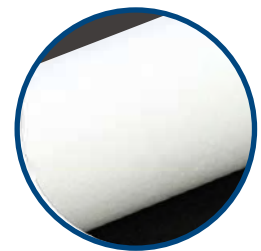
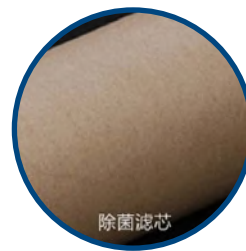
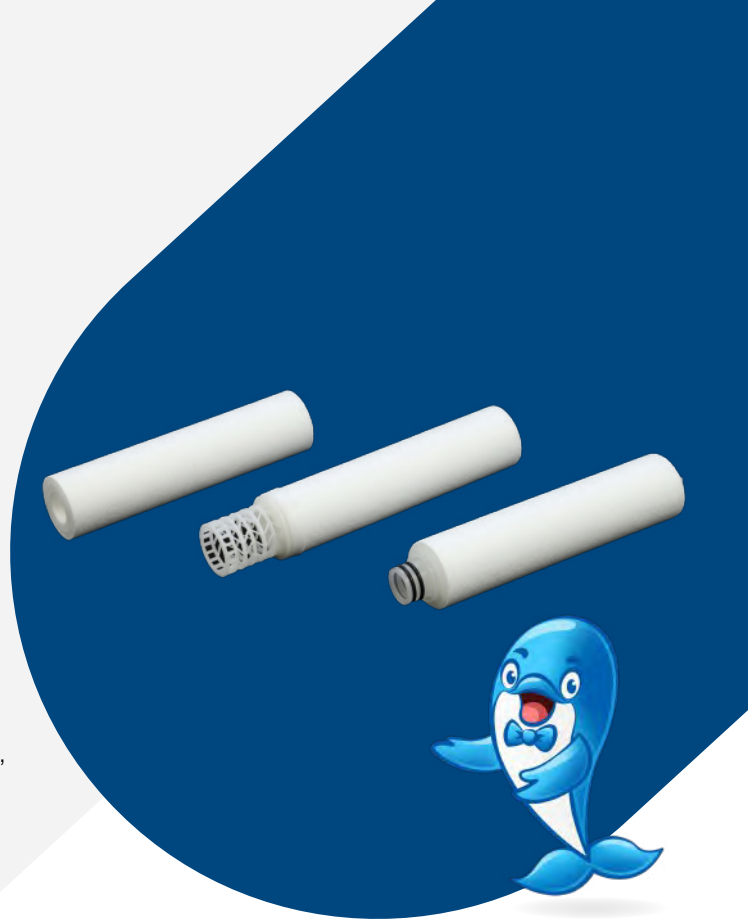
MELT BLOWN FILTER SERIES

Melt Blown S Series

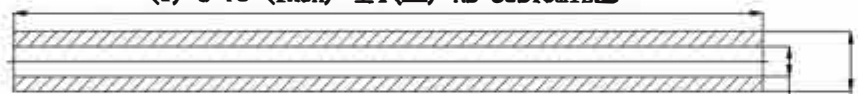
Melt Blown S Series Filter Cartridges is standard series of melt blown filter cartridges. It features fused and intertwined polypropylene fiber without the use of chemicals or glue. The fibers are bonded randomly to form 3-D microporosity in three zones. There are fine fibers for efficient particle removal and coarse fibers for strength of the structure. Changing fiber size and density creates the needed filtration rating. With lower density on the outer surface and tighter pores when moving to the inside, it can remove contaminant effectively, such as suspended substances, particulates and rust, providing efficient filtration and long service life

Product characteristics

- Three-zone structure cartridge offers high dirt holding capacity and longer service life
- Formed by thermal bond without using binders or adhesives
- 100% pure polypropylene will not contaminate the treated liquid, Wide chemical compatibility
- FDA compliant material
- All common adaptors are available



(1) 5-70 (inch) ±1(mm) AS CUSTOMIZED



(2) $\varnothing 28/30 \pm 1$

(3) $\varnothing 60-62 \pm 1$

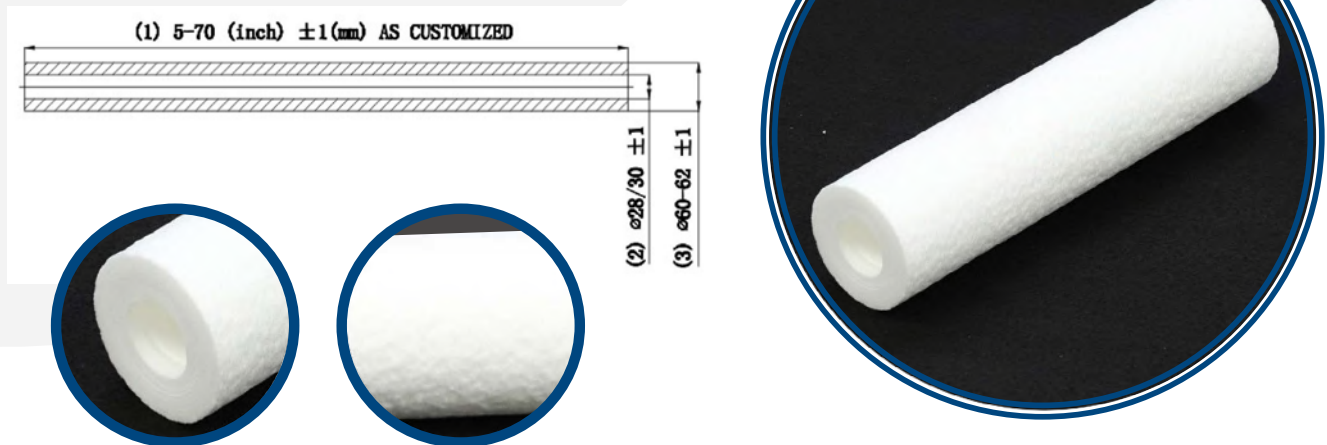
Dimension	Removal Rating: 1um, 5 um, 10 um, 20 um, 25 um, 50 um, 75 um, 100 um, 150 um
	Length: 5"(127mm), 10"(250/ 254mm), 20"(500/508mm), 30"(750/762mm), 40"(1000/1016mm), 50"(1270mm), 60"(1524mm), 70"(1778mm)
	OD: $\varnothing 60\text{mm}$, $\varnothing 62\text{mm}$, $\varnothing 68\text{mm}$, $\varnothing 114\text{mm}$
Material of Constructions	ID: $\varnothing 28\text{mm}$, $\varnothing 30\text{mm}$, $\varnothing 32\text{mm}$, $\varnothing 34\text{mm}$, $\varnothing 36\text{mm}$, $\varnothing 38\text{mm}$, $\varnothing 110\text{mm}$
	Media: Polypropylene(PP)
	End cap: Polypropylene(PP)
Performance	Seal/Gasket: Silicone, EPDM, NBR, Viton
	Core: Polypropylene(PP).
	Max. Operating temperature: 65°C
	Max. Operating DP: 2.0Bar@21°C

Melt Blown O Series

Melt Blown O Series Filter Cartridges features fused and intertwined polypropylene fiber without the use of chemicals or glue. The fibers are bonded randomly to form 3-D microporosity in three zones. There are fine fibers for efficient particle removal and coarse fibers for strength of the structure. Changing fiber size and density creates the needed filtration rating. With lower density on the outer surface and tighter pores when moving to the inside, it can remove contaminant effectively, such as suspended substances, particulates and rust, providing efficient filtration and long service life. The orange-peel surface texture increases the filtration surface area and dirt holding capacity.

Product characteristics

- Three-zone structure cartridge offers high dirt holding capacity and longer service life
- Formed by thermal bond without using binders or adhesives.
- 100% pure polypropylene will not contaminate the treated liquid, wide chemical compatibility.
- Orange Face design to extend the filtration surface area.
- FDA compliant material.
- All common adaptors are available.



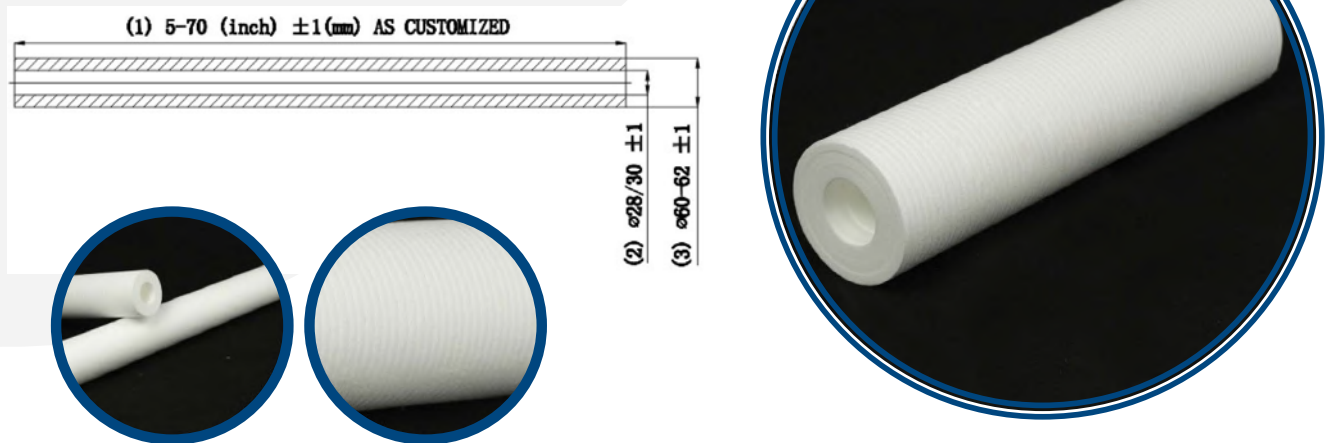
Dimension	Removal Rating: 1 um, 5 um, 10 um, 20 um, 25 um, 50 um, 75 um, 100 um, 150 um
	Length: 5"(127mm), 10"(250/ 254mm), 20"(500/508mm), 30"(750/762mm), 40"(1000/1016mm), 50"(1270mm), 60"(1524mm), 70"(1778mm)
	OD: φ60mm, φ62mm, φ114mm
	ID: φ28mm, φ30mm, φ32mm, φ34mm, φ36mm, φ38mm, φ110mm
Material of Constructions	Media: Polypropylene(PP)
	End cap: Polypropylene(PP)
	Seal/Gasket: Silicone, EPDM, NBR, Viton
	Core: Polypropylene(PP).
Performance	Max. Operating temperature: 65°C
	Max. Operating DP: 2.0Bar@21°C

Melt Blown E Series

Melt Blown E Series Filter Cartridges is fusing and intertwined of polypropylene resin without any chemical glues. The cartridges are glued at random to form 3D micro pore which will make the cartridge 3 layers with fine fibers in surface and coarse fibers and deep filtration. As the fiber and density form high filtration rating and pollutants holding capacity on diameter of filter cartridge, low pressure drop, gradual changing deep filtration structure with loose outside and close inner, strong pollutants holding capacity, it can remove contaminant effectively, such as suspended substance, particulate and rust, providing efficient filtration and long service life. Mini grooved surface increases the surface area and make the cartridge has a better appearance.

Product characteristics

- Three-zone structure cartridge offers high dirt holding capacity and longer service life.
- Formed by thermal bond without using binders or adhesives.
- 100% pure polypropylene will not contaminate the treated liquid, wide chemical compatibility.
- Embossed design to extend the filtration surface area
- FDA compliant material.
- All common adaptors are available.



Dimension	Removal Rating: 1 um, 5 um, 10 um, 20 um, 25 um, 50 um, 75 um, 100 um, 150 um
	Length: 5"(127mm), 9.84"(250mm), 10"(250/ 254mm), 20"(500/508mm), 30"(750/762mm), 40"(1000/1016mm), 50"(1270mm), 60"(1524mm)
	OD: φ60mm, φ62mm, φ114mm
	ID: φ28mm, φ30mm, φ32mm, φ34mm, φ36mm, φ38mm, φ38 mm
Material of Constructions	Media: Polypropylene(PP)
	End cap: Polypropylene(PP)
	Seal/Gasket: Silicone, EPDM, NBR, Viton
	Core: Polypropylene(PP).
Performance	Max. Operating temperature: 65°C
	Max. Operating DP: 2.0Bar@21°C

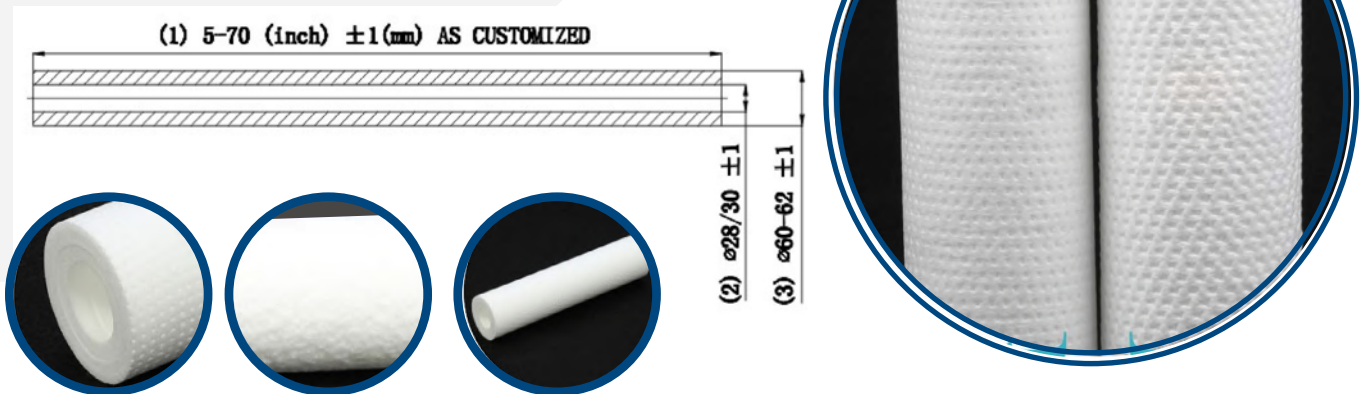
Melt Blown D Series

Melt Blown D Series Filter Cartridges is fusing and intertwined of polypropylene resin without any chemical glues. The cartridges are glued at random to form 3D micro pore which will make the cartridge 3 layers with fine fibers in surface and coarse fibers and deep filtration.

As the fiber and density form high filtration rating and pollutants holding capacity on diameter of filter cartridge, low pressure drop, gradual changing deep filtration structure with loose outside and close inner, strong pollutants holding capacity, it can remove contaminant effectively, such as suspended substance, particulate and rust, providing efficient filtration and long service life. Deep grooved surface highly extend the filtration surface area, which makes the filter has a higher flow rate and lower pressure drop.

Product characteristics

- Three-zone structure cartridge offers high dirt holding capacity and longer service life
- Formed by thermal bond without using binders or adhesives.
- 100% pure polypropylene will not contaminate the treated liquid, wide chemical compatibility.
- Depth Dot design to extend the filtration surface area.
- FDA compliant material.
- All common adaptors are available.



Dimension	Removal Rating: 1um, 5 um, 10 um, 20 um, 25 um, 50 um, 75 um, 100 um, 150 um
	Length: 5"(127mm), 9.84"(250mm), 10"(250/ 254mm), 20"(500/508mm), 30"(750/762mm), 40"(1000/1016mm), 50"(1270mm), 60"(1524mm)
	OD: φ60mm, φ62mm, φ114mm
	ID: φ28mm, φ30mm, φ32mm, φ34mm, φ36mm, φ38mm, φ38 mm
Material of Constructions	Media: Polypropylene(PP)
	End cap: Polypropylene(PP)
	Seal/Gasket: Silicone, EPDM, NBR, Viton
	Core: Polypropylene(PP).
Performance	Max. Operating temperature: 65°C
	Max. Operating DP: 2.0Bar@21°C

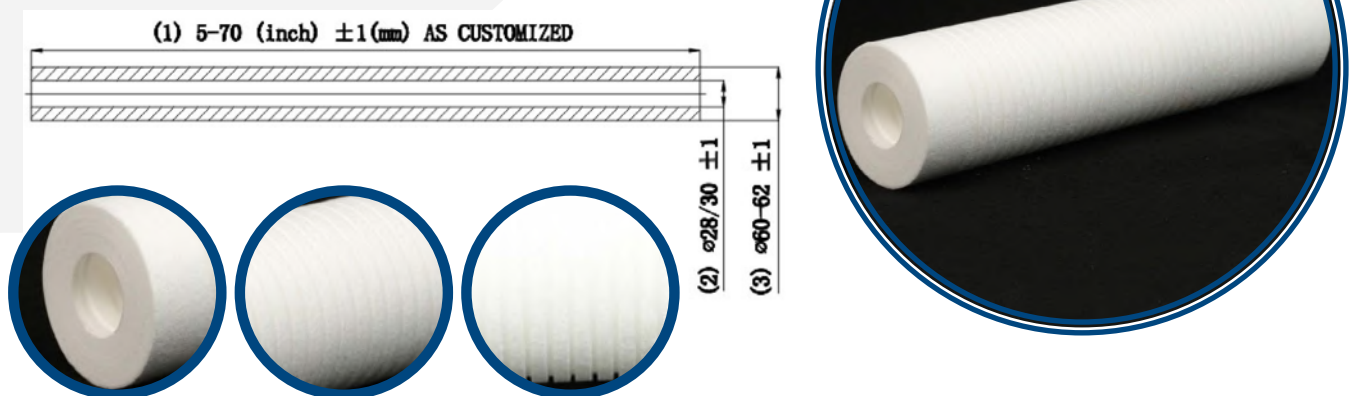
Melt Blown G Series

Melt Blown G Series Filter Cartridges is fusing and intertwined of polypropylene resin without any chemical glues. The cartridges are glued at random to form 3D micro pore which will make the cartridge 3 layers with fine fibers in surface and coarse fibers and deep filtration.

As the fiber and density form high filtration rating and pollutants holding capacity on diameter of filter cartridge, low pressure drop, gradual changing deep filtration structure with loose outside and close inner, strong pollutants holding capacity, it can remove contaminant effectively, such as suspended substance, particulate and rust, providing efficient filtration and long service life. Deep grooved surface highly extend the filtration surface area, which makes the filter has a higher flow rate and lower pressure drop.

Product characteristics

- Three-zone structure cartridge offers high dirt holding capacity and longer service life.
- Formed by thermal bond without using binders or adhesives.
- 100% pure polypropylene will not contaminate the treated liquid, wide chemical compatibility.
- Grooving design to extend the filtration surface area.
- FDA compliant material.
- All common adaptors are available.



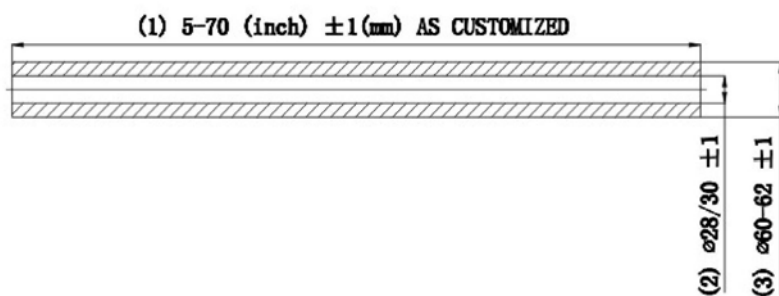
Dimension	Removal Rating: 1 um, 5 um, 10 um, 20 um, 25 um, 50 um, 75 um, 100 um, 150 um
	Length: 5"(127mm), 9.84"(250mm), 10"(250/ 254mm), 20"(500/508mm), 30"(750/762mm), 40"(1000/1016mm), 50"(1270mm), 60"(1524mm)
	OD: φ60mm, φ62mm, φ114mm
	ID: φ28mm, φ30mm, φ32mm, φ34mm, φ36mm, φ38mm, φ38 mm
Material of Constructions	Media: Polypropylene(PP)
	End cap: Polypropylene(PP)
	Seal/Gasket: Silicone, EPDM, NBR, Viton
	Core: Polypropylene(PP).
Performance	Max. Operating temperature: 65°C
	Max. Operating DP: 2.0Bar@21°C

Melt Blown P Series

Melt Blown P Series is the internal processing of dense polypropylene ultrafine fibers into a honeycomb structure from the outside to the inside increases the surface interception effect, avoids surface blockage, greatly improves the fouling ability and extends the service life of the filter core, and does not appear. Hair loss phenomenon, The lifetime is 4 times that of the ordinary PP melting filter core.

Product characteristics

- Three-zone structure cartridge offers high dirt holding capacity and longer service life
- Formed by thermal bond without using binders or adhesives.
- 100% pure polypropylene will not contaminate the treated liquid, wide chemical compatibility.
- Extend the filtration surface area.
- FDA compliant material.
- All common adaptors are available.



Dimension	Removal Rating: 5 um, 10 um
	Length: 40"(1016mm)
	OD: $\varnothing 62$ mm
	ID: $\varnothing 28$ mm
Material of Constructions	Media: Polypropylene(PP)
	End cap: Polypropylene(PP)
	Core: Polypropylene(PP).
Performance	Max. Operating temperature: 65°C
	Max. Operating DP: 2.0Bar@21°C

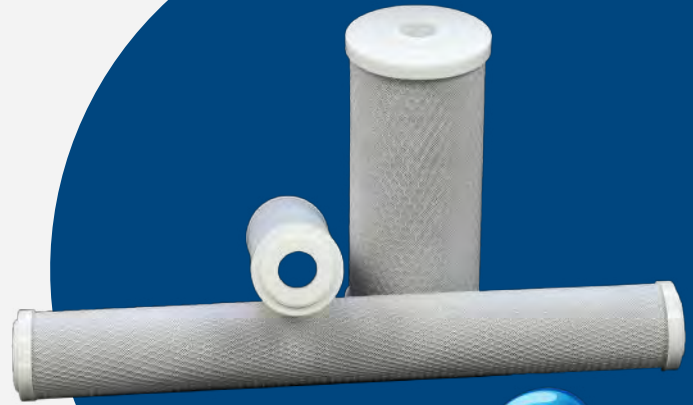
CARBON FILTER SERIES

Carbon CTO Series

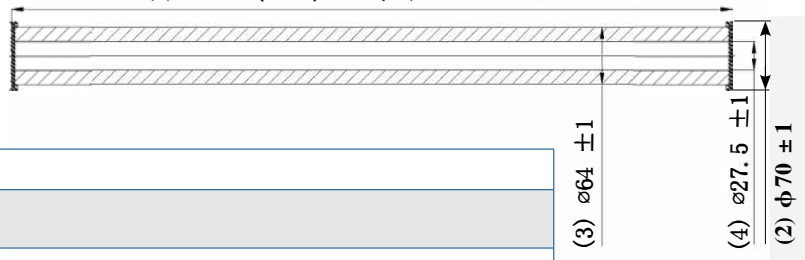
Carbon CTO Activated Carbon Filter Cartridge are formed using extruding carbon fines and food-grade binders. This makes it FDA approved for the Food/Beverage industry. It also ensures that no bad taste is left behind. This filter is also great for filtering organic matter effectively.

Product characteristics

- Good adsorption capacity.
- Remove efficiently the chlorine, peculiar smell, organics.
- Low pressure drop, steady flow.
- No carbon fine releasing.



(1) 5-40 (inch) ±1(mm) AS CUSTOMIZED



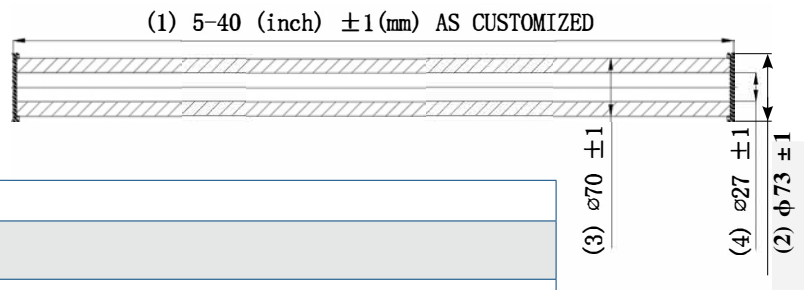
Dimension	Removal Rating: 5 um
	Length: 5"-40" (as customized)
	OD: ϕ 70mm, ϕ 112mm
	ID: ϕ 27.5mm
Material of Constructions	Media: acid washed bituminous GAC, water washed coconut shell GAC
	End cap: Polypropylene(PP)
	Seal/Gasket: Silicone, EPDM, NBR, Viton
	Core: Polyethylene(PE)
Performance	Max. Operating temperature: 52°C
	Max. Operating DP: 7Bar, 20°C
	Max. Operating Pressure: 10Bar

Carbon UDF Series

Carbon UDF Activated Carbon Filter Cartridge are formed using extruding carbon fines and food-grade binders. This makes it FDA approved for the Food/Beverage industry. It also ensures that no bad taste is left behind. This filter is also great for filtering organic matter effectively.

Product characteristics

- Good adsorption capacity.
- Remove efficiently the chlorine, peculiar smell, organics.
- Low pressure drop, steady flow.
- No carbon fine releasing.



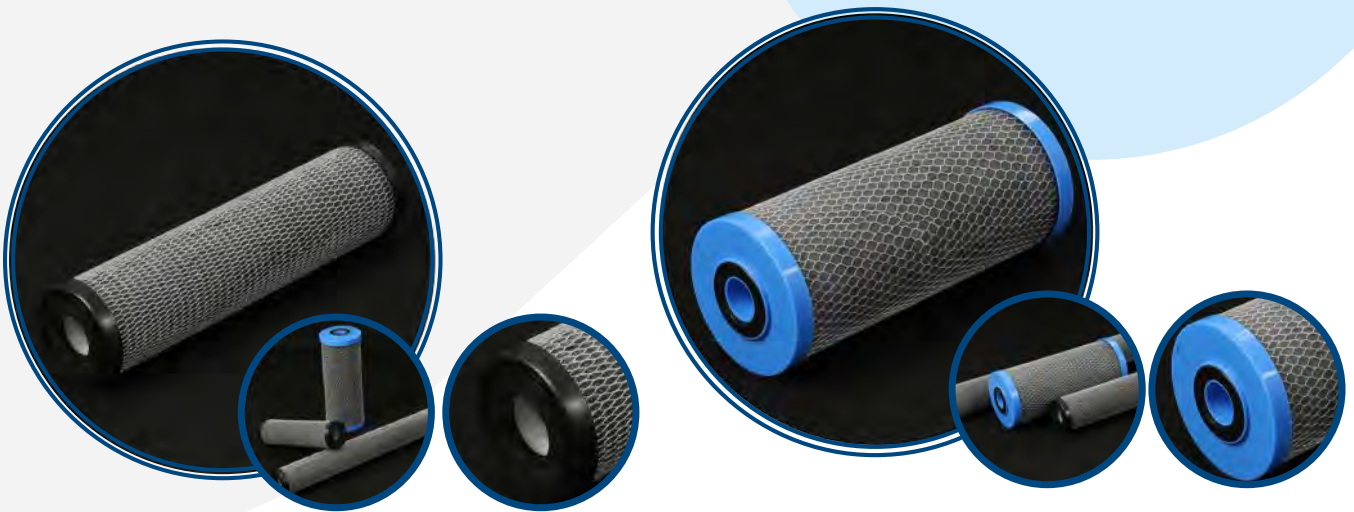
Dimension	Removal Rating: 5um, 10um
	Length: 5"-40" (as customized)
	OD: φ70mm, φ114mm
	ID: φ27mm
Material of Constructions	Media: acid washed bituminous GAC, water washed coconut shell GAC
	End cap: Polypropylene(PP)
	Seal/Gasket: Silicone, EPDM, NBR, Viton
	Core: Polyethylene(PE)
Performance	Max. Operating temperature: 52°C
	Max. Operating DP: 7Bar, 20°C
	Max. Operating Pressure: 10Bar

Carbon CIC Series

Carbon Impregnated Cellulose (CIC) Filter Cartridges combine the performance of depth filtration with the absorption of activated carbon fine. The outside deep filter media can remove particles while the activated carbon held within the filter cloth can absorb the smell, odor, sediment, pigment, VOC, and organic chemicals. The inside fiber filter prevents carbon particles and fine pollutants from passing through, thus increasing an efficient quality and integrated filtration.

Product characteristics

- Nominal 5 / 10 micron removal rating.
- Excellent dirt-holding capacity.
- Filtration and adsorption finished in one time process.



(1) 5-40 (inch) ±1(mm) AS CUSTOMIZED



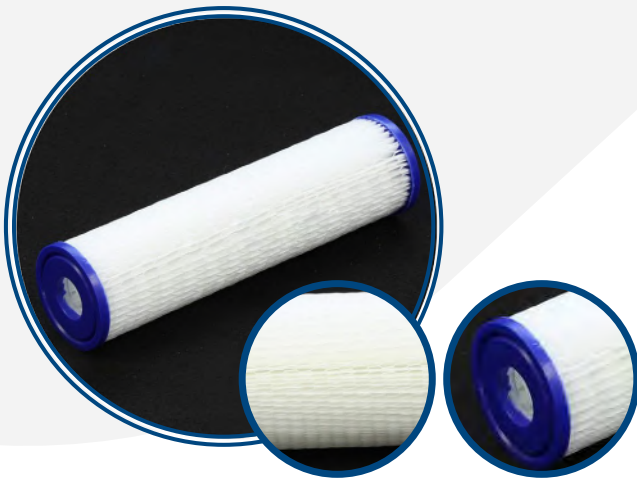
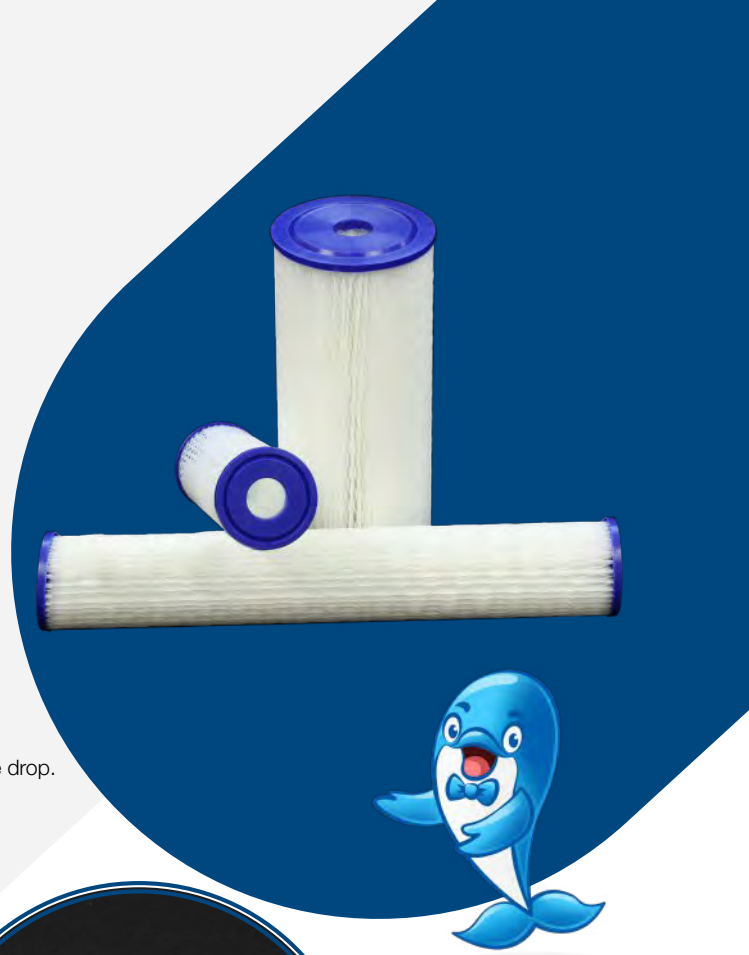
Dimension	Removal Rating: 5um, 10um
	Length: 5"-40" (as customized)
	OD: ϕ 70mm, ϕ 112mm
	ID: ϕ 28mm
Material of Constructions	Media: Carbon Impregnated Cellulose
	End cap: Polypropylene(PP)
	Seal/Gasket: Polypropylene(PP)
	Core: Polyethylene(PE)
Performance	Max. Operating temperature: 52°C

PLEATED-SP FILTER SERIES

Pleated-SP Filter Cartridges are washable, reusable, and durable, because of this the cartridge has an extended life span and is more economical. It also has an increased dirt holding capacity so cleaning is required less often.

Product characteristics

- Pleated design increased surface area and contaminant removal.
- Longer filtration runs for fewer change-out and less maintenance. Low pressure drop.
- Designed for general water filtration purposes.

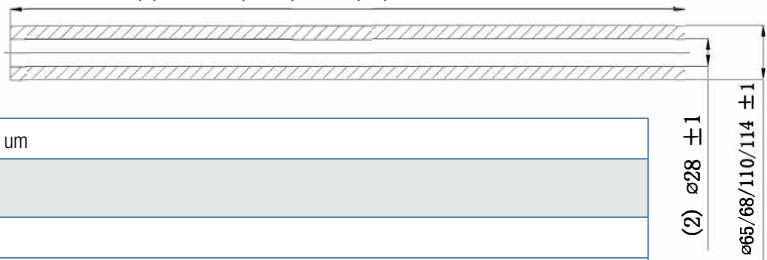


String Wound PP Series



String Wound AC Series

(1) 5-40 (inch) ±1(mm) AS CUSTOMIZED



Dimension	Removal Rating: 1 um, 5 um, 10 um, 20 um, 50 um	(2) e28 ±1 e65/68/110/114 ±1
	Length: 5"-40" (as customized)	
	OD: φ70mm, φ112mm	
Material of Constructions	ID: φ65mm, φ68mm, φ110mm, φ114mm	
	Media: Polyester, Polypropylene Cellulose	
	End cap: PU Plastisol Core: Polypropylene(PP)	
Performance	Max. Operating temperature: 37.8 °C	
	Max. Operating DP: 4.0 Bar	
	3-10GPM, depend on removal rating	

Fully welded filter bag

Fully welded filter bag is designed for high precision filtration. It adopts advanced hot melt seamless welding technology to avoid needle hole leakage at the seam of traditional seam filter bag. It brings a new idea to the traditional filter bags and is suitable for the occasions with relatively high filtration requirements.

The filter precision range of the fully welded filter bags is 0.22-400 micron. The bags can have stainless steel, galvanized iron rings and PPIPE engineering plastic rings.



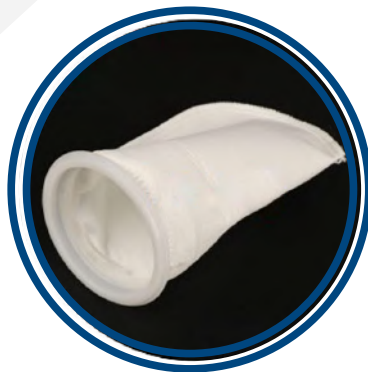
NO.1 PE+PP



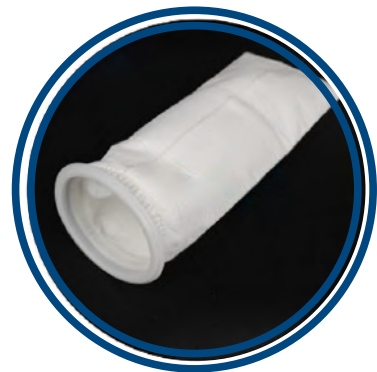
NO.1 PP+PP



NO.2 PP+PP



NO.3 PE+PP



NO.4 PE+PP

Filter Media	Max. Operating temperature	Strong Acids	Weak Acids	Weak Acids	Weak Bases	Oils & Greases	Aromatics	Glycol Ethers	Organic Solvents	Water Microorganism
FE	150-170 °C		•			•	•	•	•	•
PP	90-110 °C	•	•	•	•	•	•		•	•
NMO	150-170 °C			•	•	•			•	•
PTEE	250-300 °C	•	•	•	•	•	•	•	•	•

Mesh	30	35	40	45	50	60	70	80	100	120	140	170
µm	55	500	420	354	297	250	210	177	149	125	105	88
Mesh	200	230	270	325	400	425	500	625	1250	2500	6250	12500
µm	74	63	53	44	33	25	20	15	10	5	2	1

Sewing needle felt filter bag

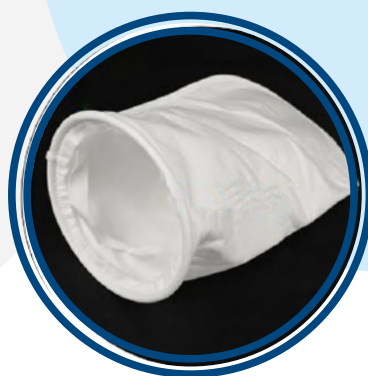
The needle-punched felt filter bag is made of polypropylene, polyester, nylon and Teflon.

The filter bag is produced by a high-speed industrial sewing machine without silicone oil cooling, which will not cause silicone oil pollution. All the filter bags are stitched firmly. After processing, the rim mouth is fitted into the container and tightly sealed with the unique design of the filter.

The filtering accuracy of needle-punched felt filter bag ranges from 0.22 to 400 microns. The bag mouth can have stainless steel ring, galvanized steel ring and PEIPP engineering plastic sealing ring



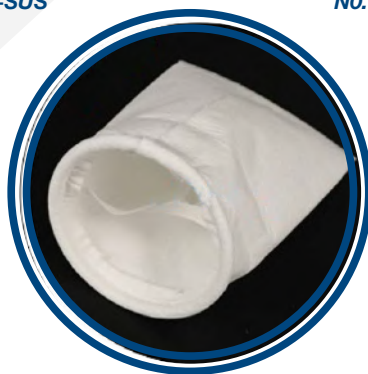
NO.1 PE+SUS



NO.1 PP+SUS



NO.2 PP+ZINC



NO.3 PE+ZINC



NO.4 PE+SUS

Ltem	Ltem	Choice
Bag materia	PE	PE/PP/NMO/PTFE
Micron	10 μm	0.22-2500
Bag Size	P1S	P1S 01 7"φ×17"L 180x450 / P2S 02 7"φ×32"L 180x810 / P3S 03 4"φ×8"L 105x230 / P4S 04 4"φ×14"L 105x380
Collar	S	Stainles See / Zing PlaedSteel / Polypropylene / Polyester / Tie onBag(NoRing)
Body Construction	S	Sewn / Welded
Rnig Construction	S	Sewn / Welded
Type Of Bottom	R	Round / Tine

Mesh	30	35	40	45	50	60	70	80	100	120	140	170
μm	55	500	420	354	297	250	210	177	149	125	105	88
Mesh	200	230	270	325	400	425	500	625	1250	2500	6250	12500
μm	74	63	53	44	33	25	20	15	10	5	2	1

Snowate



Ms Snow Zhao
snow@snowate.com
snow@membranehousing.org
Mobile: +86-15030811699
(WhatsApp, WeChat, Skype, Viber)